



13 Endeavour Road

SSDCP Solander Shadow Study

In support of a Planning Proposal for:

13 Endeavour Road
Caringbah
NSW

Prepared for
Aliro Group

Issued
14 April 2021

Level 2, 490 Crown Street
Surry Hills NSW 2010
Australia
T. 61 2 9380 9911
architects@sjb.com.au
sjb.com.au

We create amazing places



At SJB we believe that the future of the city is in generating a rich urban experience through the delivery of density and activity, facilitated by land uses, at various scales, designed for everyone.

Ref: 6272
Version: 01
Prepared by: JM
Checked by: FL

Contact Details:

SJB Urban
Level 2, 490 Crown Street
Surry Hills NSW 2010
Australia

T. 61 2 9380 9911
architects@sjb.com.au
sjb.com.au

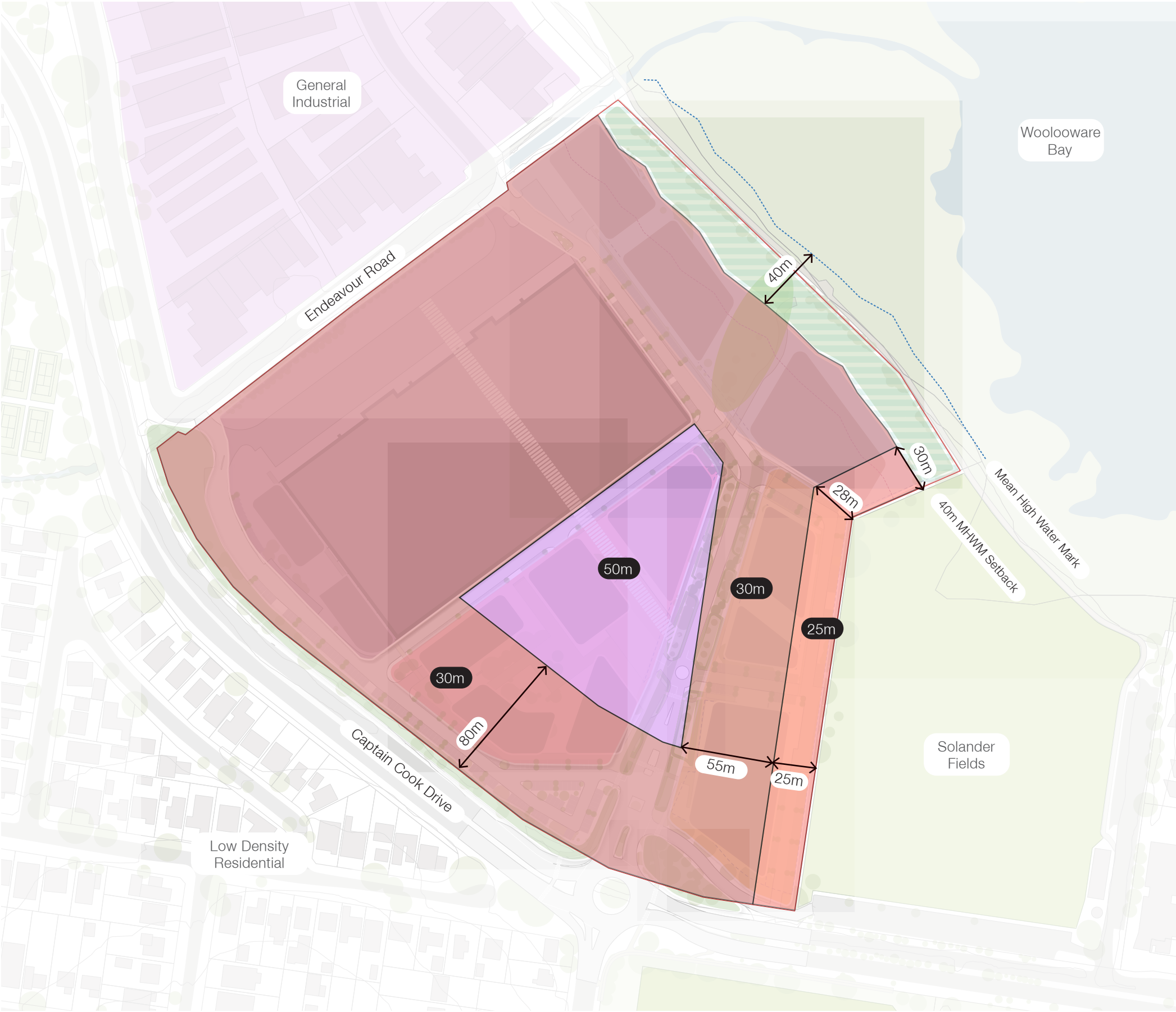
SJB Architecture (NSW) Pty Ltd
ABN 20 310 373 425
ACN 081 094 724
Adam Haddow 7188 John Pradel 7004

Issue Revisions		
01	Draft for review	14.04.2021

Maximum Building Height

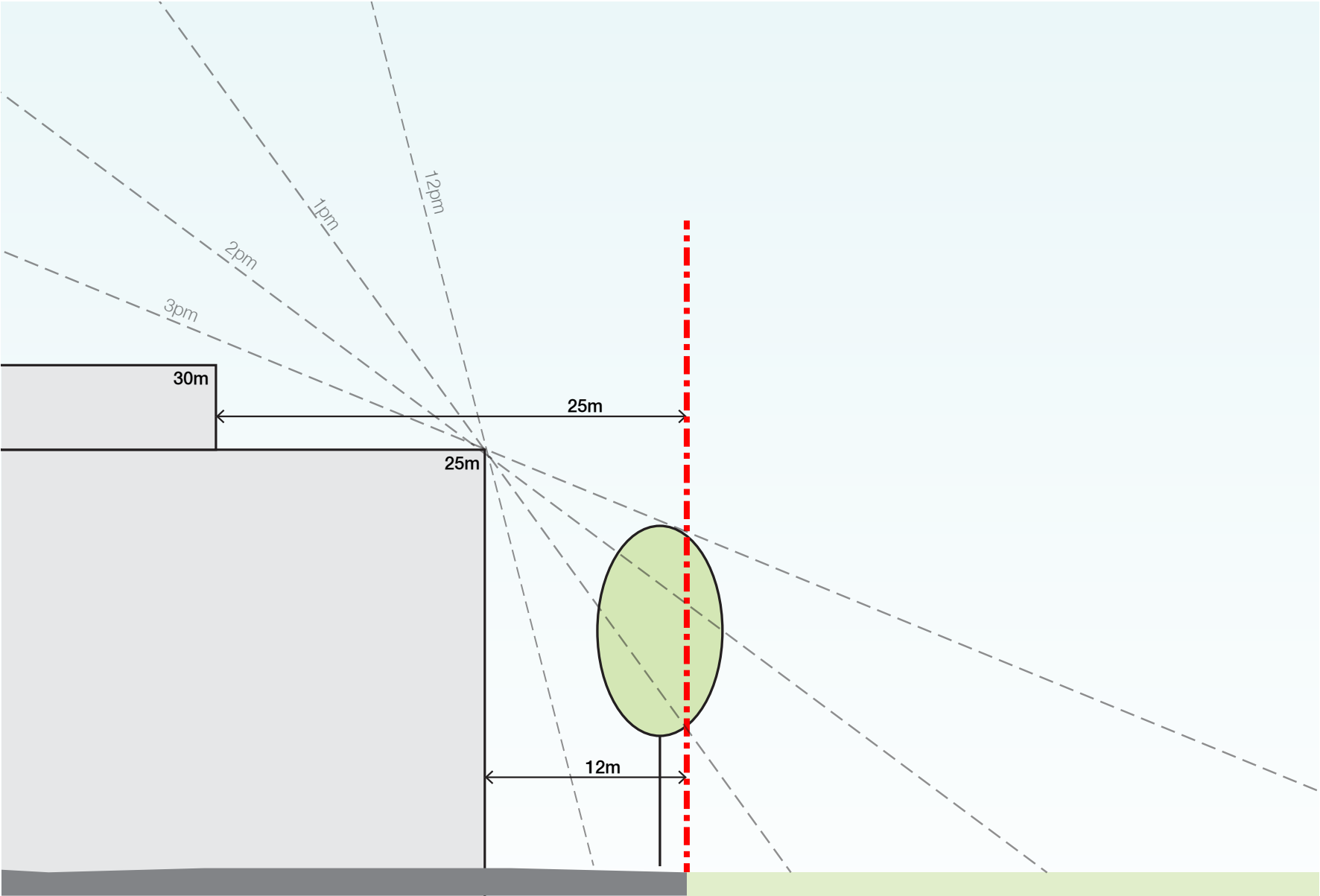
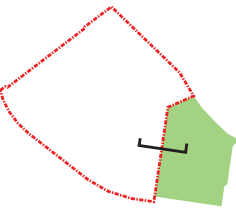
KEY

- 50m Maximum Building Height (as defined in SSLEP 2015)
- 30m Maximum Building Height (as defined in SSLEP 2015)
- 25m Maximum Building Height (as defined in SSLEP 2015)
- Mean High Water Mark
- 40m MHWL Setback Buffer



1:1,600 @ A3

Indicative Section



Shadow Study

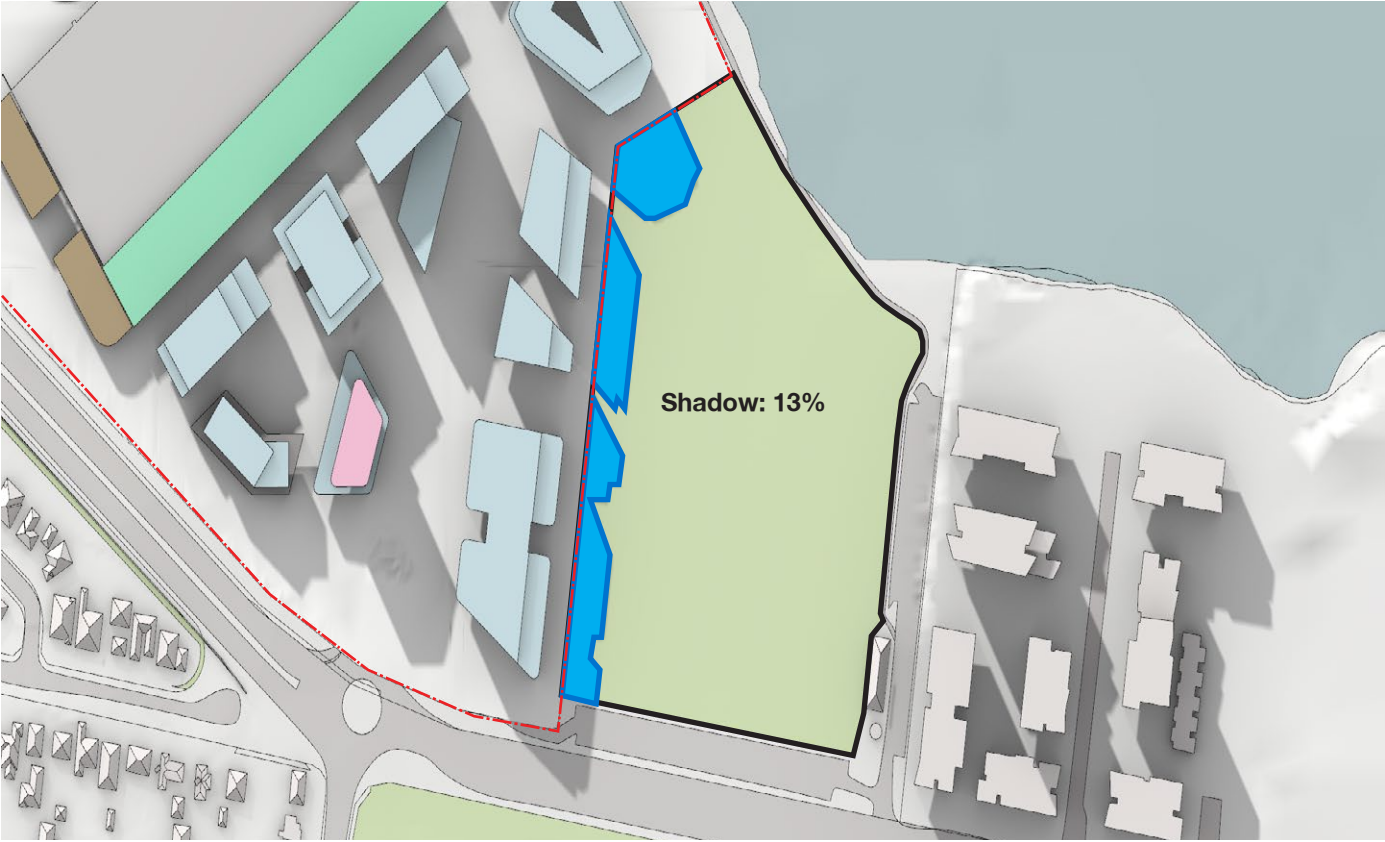
- Key
- Site Boundary
 - Solander Fields
 - Overshadowing



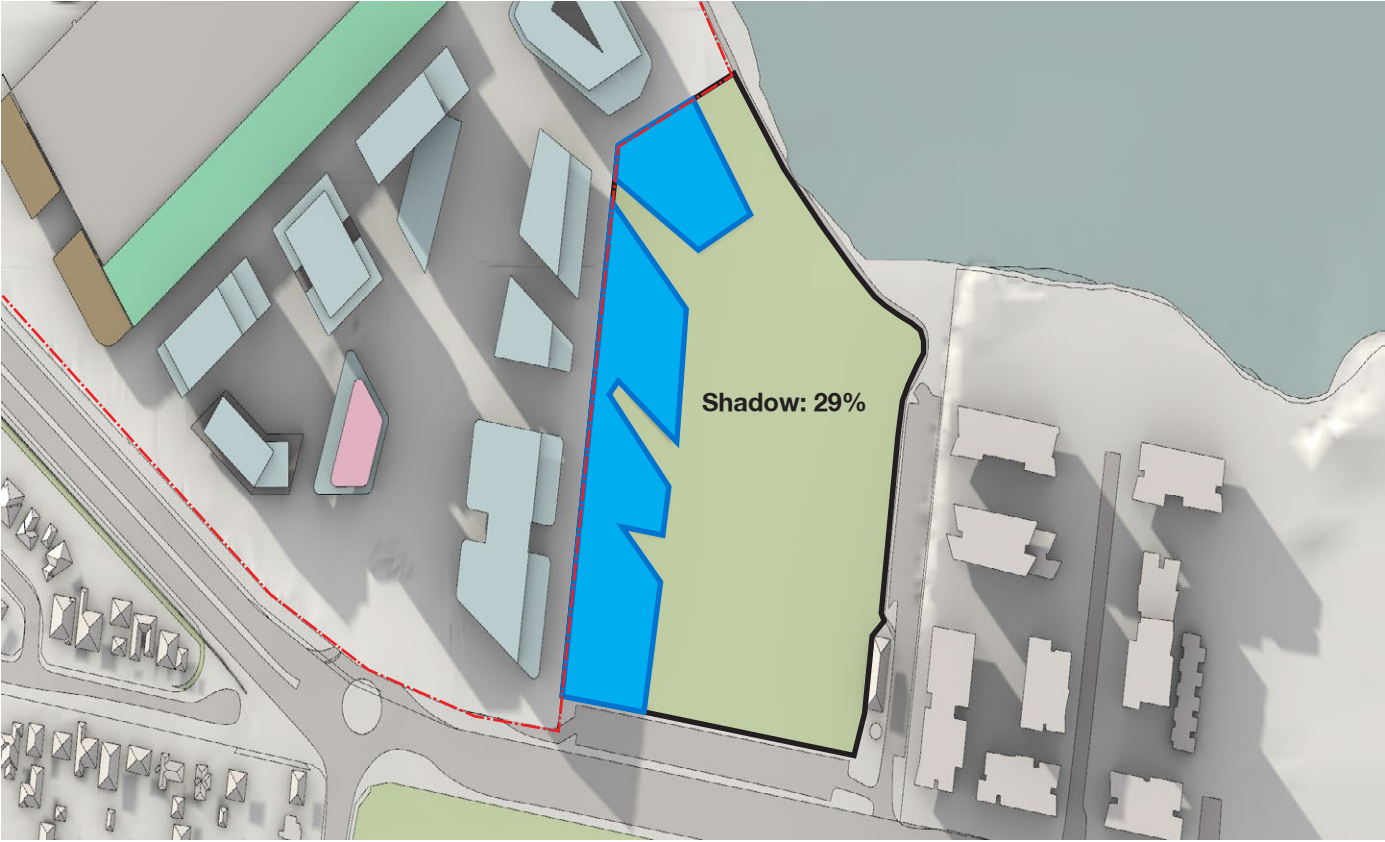
12pm



1pm



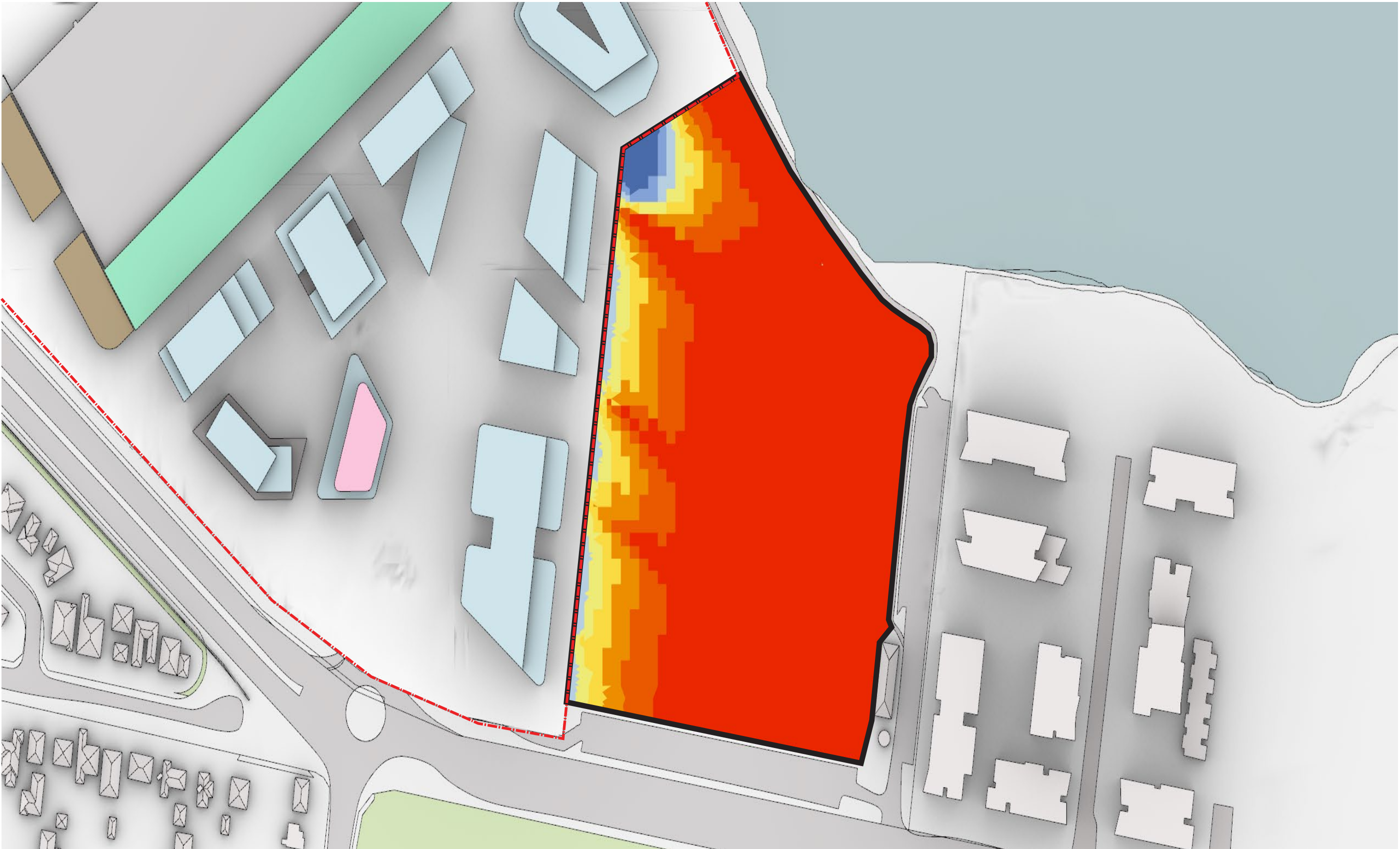
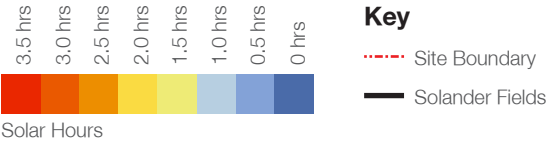
2pm



3pm

Solar Insolation 12pm - 3pm Winter Solstice

Solar insolation measures the amount of hours between 12pm and 3pm that Solander Fields receives direct sunlight, i.e. Red = 3.5 hours of direct sunlight between 12pm and 3pm



SJB Urban

sjb.com.au

We create spaces people love.
SJB is passionate about the
possibilities of architecture,
interiors, urban design
and planning.
Let's collaborate.

Level 2, 490 Crown Street
Surry Hills NSW 2010
Australia
T. 61 2 9380 9911
architects@sjb.com.au
sjb.com.au